

# LANGUAGE MATTERS!

Early identification and intervention changes lives!

## What is language delay?

A 2-year-old who isn't speaking at least 50 words, or who can't put two words together has early language delay.



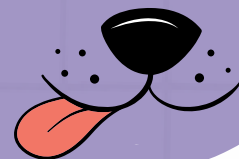
## Is it common?



- It is very common!
- 15-25% of 2 year olds meet this criteria.
- Half will catch up to the other children by the time they turn 3 years old, even without intervention.
- BUT 25-50% will continue to have language & learning problems.

## How can you help?

- Be aware.
- Try active listening techniques. (Resources available on our website.)
- Ask for help! If you think that your child may have a language delay, the child should be referred to an audiologist for a hearing test. You know your child better than anyone else!!!



## Hearing loss Effect on Understanding Speech

### Normal Hearing

On a rainy day, we can jump in puddles, splash around, and create the biggest, happiest mess together!

### Mild Hearing Loss

On a rainy day, we can jup in puddle\*, splah around, and create the bigget, happee\* mes toge\*her!

### Moderate Hearing Loss

A ay a, we ca jp i pdde\*, spa aound, ad ceate he bge, happee mes toghe!

### Severe Hearing Loss

*More distortion*

### Profound Hearing Loss

*More distortion and tinnitus (ringing in the ears)*